

Plenum box

PLVCU



Description

The plenum box is intended for supply and exhaust air.

It is intended to accommodate a valve.

It is designed for ceiling installation but can be used at other locations as well.

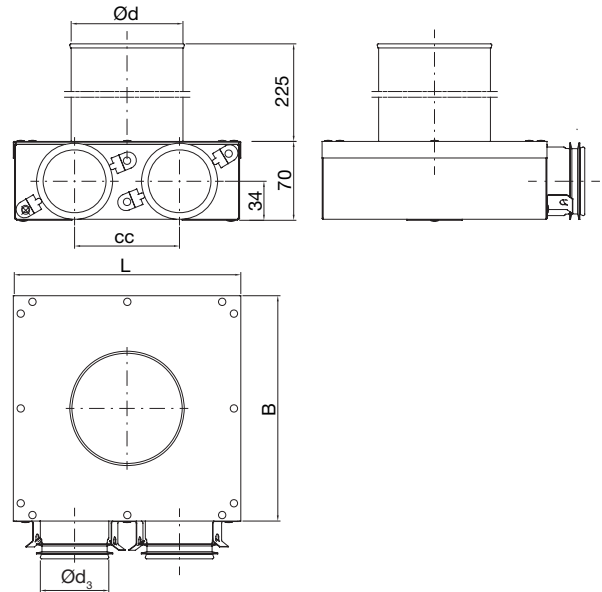
All types have $\text{Ø} 63$ mm studs with Lindab Safe sealings for connections of either SR 63 spiral-seamed duct or semiflexible duct LFPE. Each $\text{Ø} 63$ connection is equipped with a clip to hold the semiflexible duct LFPE – Smart lock function.

Two turnable anchor plates, placed on the bottom of the manifold, can be used for fixation.

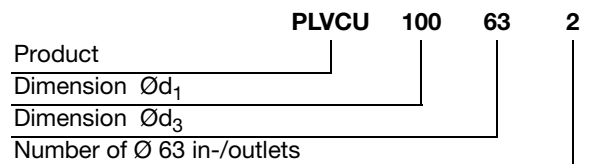
Fulfils the requirements for air tightness class D.

The shown pressure drop is for the box alone, which means that the pressure drop for the valve has to be added.

Dimensions

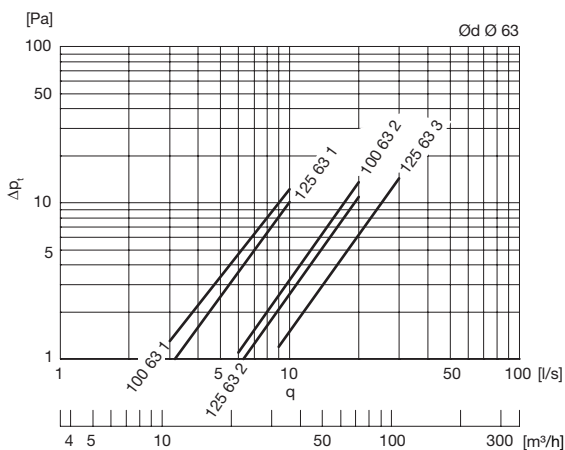


Ød nom	Ød ₃ nom	# of Ø63	L mm	B mm	cc mm	m kg
100	63	1	184	182	-	0,90
100	63	2	206	204	95	1,00
125	63	1	184	182	-	0,90
125	63	2	206	204	95	1,00
125	63	3	297	295	95	1,60



Technical data

Supply



Exhaust

